

VIPER[&]VLS

VIPER2 - New Features & Options



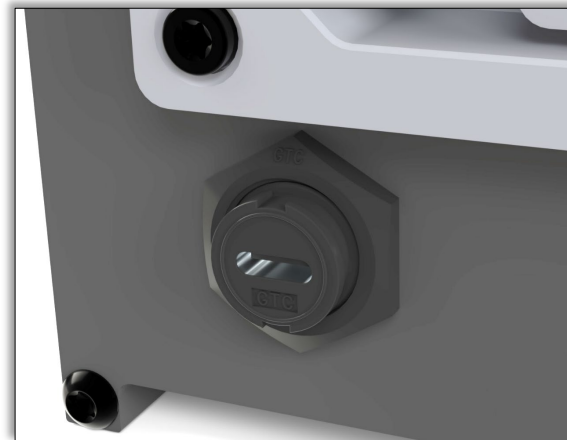
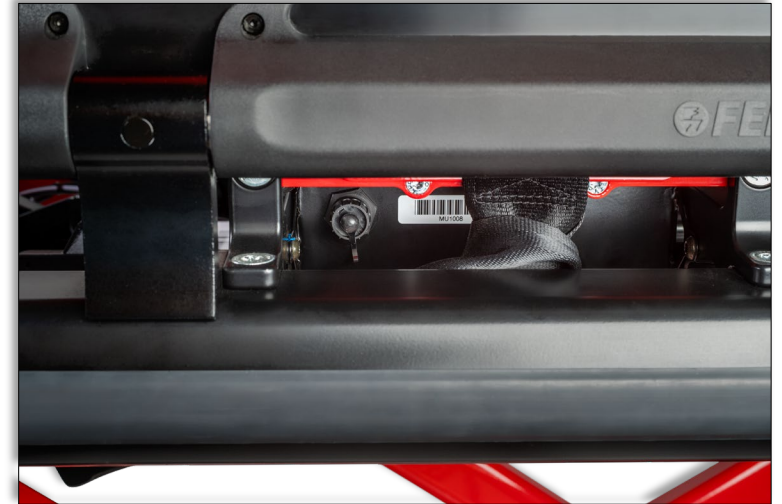
VIPER2 Stretcher - New Features

- **Operation, Reliability & Safety**
 - New design Electrical box
 - New specification Battery technology, housed in separate enclosure
 - New Hydraulic Actuator unit
 - New Electronic Stretcher lock/release mechanism
 - Improved design Sensor system
 - Option of 200 mm wheels (150mm wheels also remains available)
 - Option of Lighting
- **Compliance to latest standards**
 - Removable battery
- **Compatibility**
 - Same design Viper Loading System (VLS), VIPER2 fully backwards compatible
- **Accessories**
 - Increased range of Options & Accessories
 - Pre-prepared holes for easier retrofit of optional accessories

VIPER2 - New Features

New Electronic Box

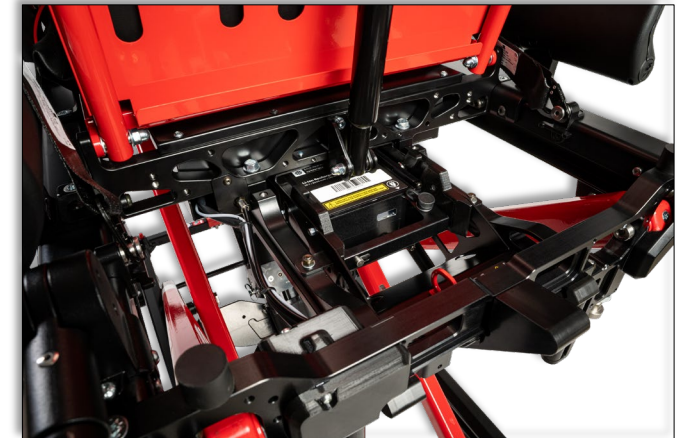
- Revised location of stretcher isolation on/off button, easier to access
- Easier firmware updates via USB-C connector, if/when required
- No need to open electronic box to access upgrade cable connectors



VIPER2 - New Features

New Specification 36 VDC Battery

- Increased capacity to 9 Ah (previously 5 Ah)
- Can operate at much wider range of temperatures (from -40°C to +60°C)
- Battery separate to Electronics box
- Battery pack removable from stretcher
- Can charge battery inside & outside of vehicle
- Safe for use in Euro6+ vehicles (from 9 V)
- Compliance to new EN 1865-2:2024 standards requirements
- Battery certificated for safe shipment (UN 38.3 & EN 62133-2)



VIPER2 - New Features

New Hydraulic Unit

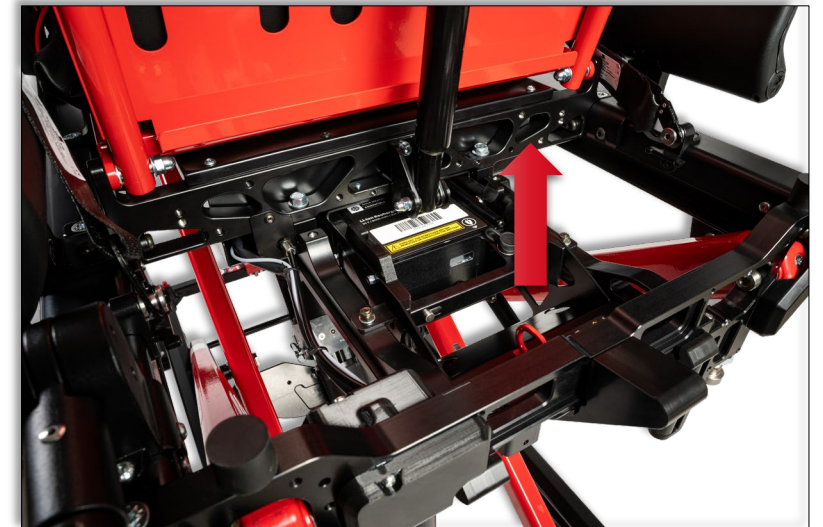
- Latest generation technology
- Enclosed unit with Integrated pump
- Lighter weight by approx. 2 kg to previous actuator (overall weight of VIPER2 same as Viper 1)
- More power but with lower electrical consumption, reduced battery usage
- Improved operation on manual over-ride, legs lower quicker when deploying manual over-ride handle



VIPER2 - New Features

New Electronic Stretcher Lock/Release system

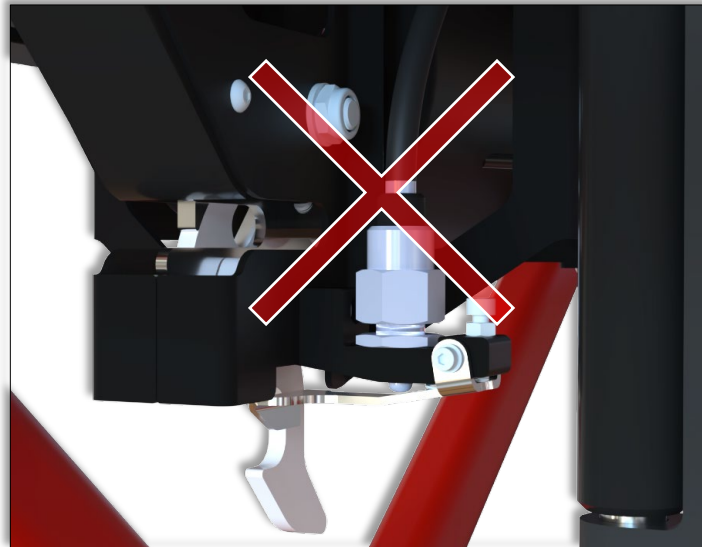
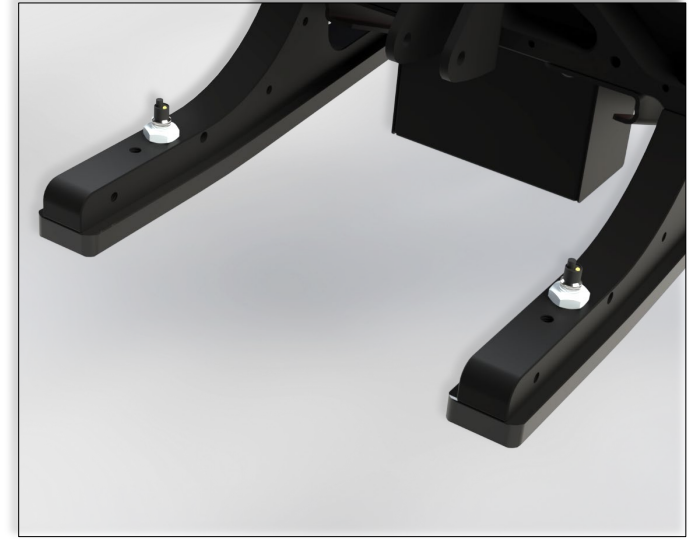
- Stretcher now locked/released from loading arm electronically
- Single button press to release stretcher
- “Lock status” indicator light (locked/not locked)
- Secure release of stretcher from loading system (only when stretcher legs are detected to be touching the ground)
- “Safe to release” indicator and interlock
- Manual over-ride release lever (in case of failure/no power)



VIPER2 - New Features

New Sensor System design

- Double inductive sensors replace previous single central sensor
- Eliminates tilting issues of sometimes not detecting stretcher on platform
- Sensors in more protected location
- No adjustment or calibration of sensor required



VIPER2 - New Features

New “Minimum Transport Height” - moving patient in lowered position

- New pre-set “Minimum Transport Height” which has been included to allow stretcher to be transported in the down position (when using Push-poles)
- Min Transport height position is just above min height position, such that foot-end directional wheel locks do not get engaged when lowering the stretcher to this position
- Stretcher can be lowered down to lowest position simply by pressing down button again

VIPER2 - New Options

200 mm wheels

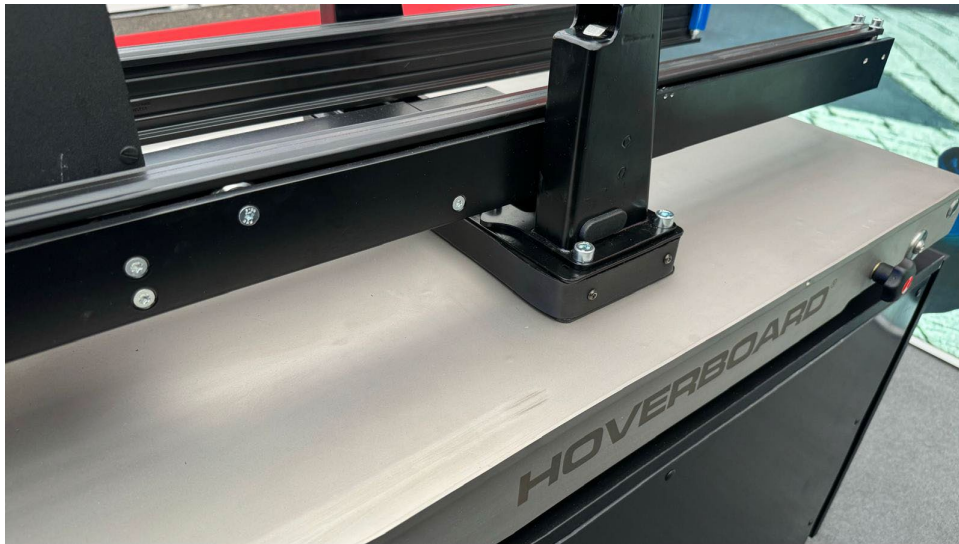
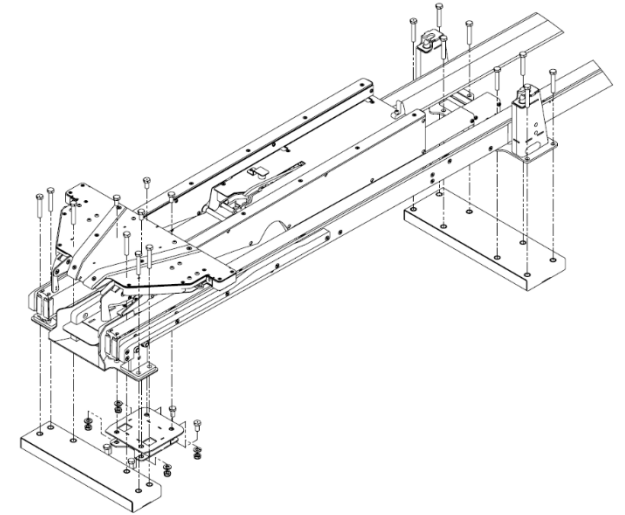
- 200 mm wheels available as option
- Requires VLS loading platform positioned higher in vehicle
- Special interface block available to raise VLS
- 200 mm wheels can also be retrofitted to existing Viper stretchers



VIPER2 - New Options

VLS height to accommodate Viper with 200 mm wheels

- No change in Viper Loading System (VLS) design Viper / VIPER2
- Interface block to allow VLS to be raised up higher in vehicle to accommodate stretchers with 200mm wheels



VIPER2 - New Options

Lighting Option

- Lighting option to aid visibility when moving stretcher
- Also available as retrofittable kit for existing Viper stretchers



VIPER2 - New Options

Manoeuvring Push Poles

- Push Pole Option for manoeuvring stretcher at a lower height
- Push poles on all 4 corners
- Poles can be detached from stretcher
- Push Poles and black Push bar can be fitted on same stretcher
- Push Pole option is retrofittable to existing Viper stretchers



VIPER2 - New Options

Oxygen Cylinder holder

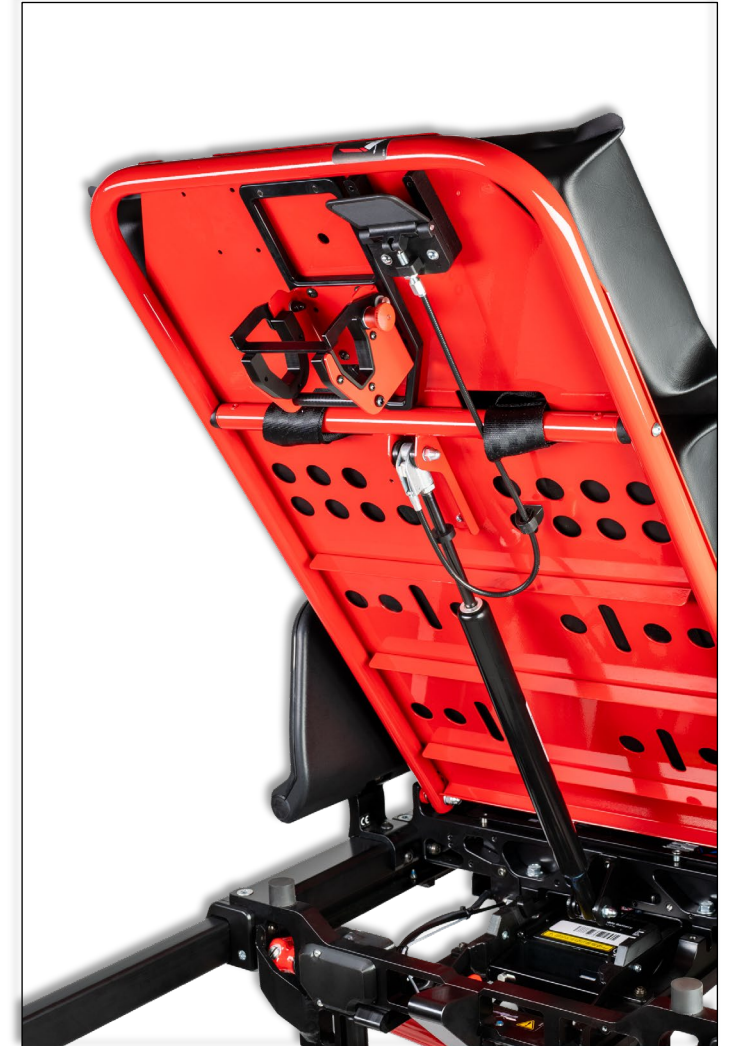
- Allows O2 cylinder to be attached to stretcher at head-end
- Crash tested, can use also whilst in vehicle
- Also retrofittable to existing Viper systems



VIPER2 - New Options

Latching Defib Hook

- Allows Defib to be attached to the rear of stretcher backrest when moving patient whilst outside of vehicle
- Also retrofittable to existing Viper systems



VIPER2 - New Options

Head-end netting for holding documents

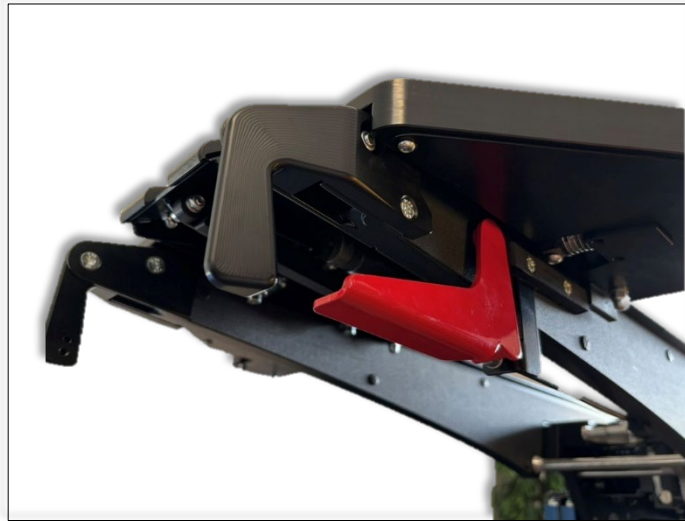
- Netting that attaches to head-end to allow documents or other lightweight items to be stowed whilst moving the stretcher
- Also fits to previous Viper systems



Viper Enhancements

Other changes/improvements already previously implemented

- Nose entry point of the VLS Loading System revised design for smoother loading
- Aluminium red release handle with hand protection



VIPER2 Availability

- Available to order with immediate effect, first production deliveries from September 25
- No change in pricing for baseline VIPER2 stretcher/ VLS loading system
- Accessory / new options pricing included in new VIPER2 2025 price list
- New User manuals, Service manuals, Parts lists, etc. to be issued in coming weeks

